

LYNCH

Your regular newsletter from
L-Lynch Plant Hire & Haulage
October 2019

LEADER



Lynch Family Fun Day provides pleasure for all

Thousands of people attended the Lynch Operator Family Fun Day on August 4th, 2019.

The event proved to be yet another fantastic occasion and provided an opportunity for staff, suppliers, customers and the local community to enjoy a family day out of fun and entertainment as well as to support the Rainbow Trust Children's Charity. Over £1,000 was raised on the day for the charity.

The day was very much skewed towards creating fun for all attendees. Lynch organised a host of events to keep both young and old entertained.

There were a number of 'crazy' operator challenges keenly contested this year as up for grabs were prizes of Apple watches. In addition, a 'buccaneering' bull ride, bungee trampoline, children's soft play areas, balloon artists, face painting, an ice cream van, hog roast, fish and chips, pizza stall and a burger stall along

with live demonstrations of remote controlled heavy plant and equipment were available for all to enjoy. There was also an opportunity for prospective operators to try out their skills on the simulator as well as plenty of training and recruitment advice on hand.

Director Merrill Lynch said "It has been another splendid day and I can't thank our staff enough for helping us to put on such an incredible event. It's become a special day in the Lynch calendar which we all look



forward to as it gives us the chance to interact with many of our staff, especially our operators and drivers who are continually busy on major infrastructure projects around the country. This makes it almost impossible to see them during the course of the year, so this annual event helps us to meet them in person and be able to personally thank them for the huge contribution they make to our business. I have seen so many happy and excited faces here today, particularly the children, who have enjoyed the opportunity of getting up close and personal with our brand new machines. The opportunity of being able to sit in the driving seat of the many excavators, dumpers and lorries on display seems to get more popular every year. We would like to thank everyone that took part and supported the event this year. We are already looking to plan another special event next year to celebrate our 40th Anniversary."



Lynch Plant hire would like to give a special thanks to our sponsors, Komatsu, Volvo Trucks, JMS Powered Access, Faymonville, NRS, GKD, Strickland, Kobelco, HAS, Trafco, Hydrema and TJC-Wacker Neuson. Without their support the day would not have been so successful.

Jeans for Genes Day

Lynch supported this event last month and over £300 was raised by staff which was then matched by the company, so all in all £1,000 was raised for this worthwhile cause.

One in twenty five children has a life-altering genetic disorder that makes

their life very difficult. This is a cause close to our hearts and by wearing our jeans and donating we hope we have helped in some small way to change the lives of these children. If you'd like to find out more about Jeans for Genes Day please visit: jeansforgenes.org



Head Office and Stanmore (inset) staff who participated in the charity day

Lynch acquires Bomag 8500 compactor

As a result of a Highways England safety notice following an investigation into site accidents involving compact plant, Lynch immediately acted and, in conjunction with manufacturer Bomag, has taken delivery of the first smooth cylinder, remote controlled multi-purpose compactor.

Everything is controlled from a safe distance with radio remote control enabling the compactor to get to the places where operators can't get to or would rather not go! If by chance the operator does enter into the close vicinity of the machine, the 'Bomag Operator Safety System' automatically shuts it down to prevent any potential accident. The 8500 has an operating weight of around 1.6t and achieves outstanding compaction results on soil compaction in trenches, sewers and on pipeline construction.



Additionally the operator knows when compaction is finished as the 'Bomag Economizer' automatically determines compaction progress. Expensive reworking is no longer necessary and over compaction and unnecessary passes are also avoided, resulting in time savings of up to 25%.

This is another first for Lynch as we continue to make the safety of site workers and operators paramount.



Say 'halo' to our new Beavertails

Lynch has recently taken delivery of a number of new Beavertails which have been equipped with the very latest safety features including a near side lower door window and the new HALO system.

In fact the vehicles not only offer the driver greater safety but the cab interior has also been designed to give greater comfort and better all-round visibility. Some of the new features these new vehicles provide include:

- near side lower door window - for better driver vision
- HALO system - gives the vehicle greater visibility to all road users especially in darker weather.
- Red Zone - this exclusion zone helps keep people out of the danger zones
- walk ways - when working at height these reduce the risk of fall.
- new ramp angles - makes loading and unloading safer due to lower angles of incline.
- standard fitment of left turn audible warning/sensors for VRU (Vulnerable Road Users).

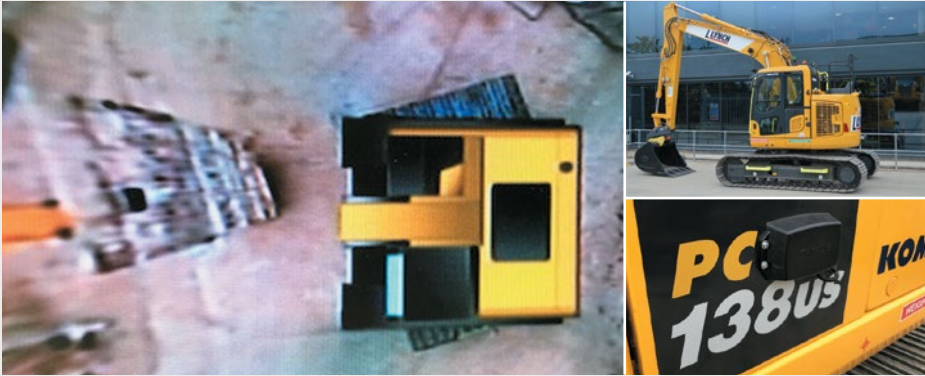


Running the 15 Bridge Challenge

Congratulations to Team Lynch Brothers (AKA Darren, Rob & Merrill Lynch) who completed their '15 Bridge Challenge' in aid of the Playskill charity. This involved running 25km over fifteen of London's bridges. On a glorious day the brothers also somehow managed to find and persuade members of the public to participate in a number of different warm up exercises on each bridge. Look carefully at the pictures below and you will notice that the members of the public increase in turn with the bridge number, resulting in fifteen of them doing an exercise class on Putney Bridge!!

Great fun was had by all and Darren, Rob and Merrill want to thank everyone for their support and donations. Over a £1,000 being raised for this worthy cause.

First to install Brigade's Backeye®360 system



In response to a direct request from Balfour Beatty to investigate safer options when slewing, Lynch is the very first plant hire company to install Brigade's Backeye®360 camera and Radar OSD (On-Screen Display) vehicle safety systems to one of its Komatsu excavators. This particular one is now on route to be used in Balfour Beatty's training area on the M4!

This new 'Backsense' system has been designed to significantly reduce accidents by detecting people and objects in blind spots. It detects stationary and moving objects, providing the operator with in-cab visual and audible warnings — the obstacle detection sensors work effectively in harsh environments as well as in poor visibility, including darkness, smoke

and fog. The visual monitor also incorporates a traffic light colour bar warning which goes from green to red as the object gets progressively closer and where in relation to the machine the object has been detected.

As one of the leading plant hire companies in the UK Lynch is always reviewing the safety and the well-being of all site personnel. Therefore a key reason for choosing this system was that it met the ISO standard for earthmoving equipment which states that, in order to enable proper, effective and safe operation, the operator must be able to 'detect the presence of a standing person (of approximately 1.5m tall), 1m out from the perimeter of the machine. The system is transferable across different machines and, as part of its ongoing safety strategy, Lynch will be looking to fit more to other vehicles in our fleet.

This is another first from Lynch and one which will further reduce the risk of potential accidents.

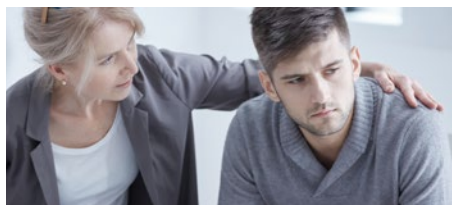
Keep talking about mental health issues

Last month Lynch recognised 'Suicide Prevention Day'. As a company that operates in the construction arena it greatly concerns all at Lynch that the suicide rate in the industry is one of the highest in the UK.

Every 90 minutes in the UK a life is lost to suicide and it doesn't discriminate. It's the biggest killer of people under the age of 35, more deadly than cancer and car crashes with men three times more likely to take their own life than women. These, we think you will agree, are disturbing facts. It's only right therefore that we continue to raise awareness of this problem and the support mechanisms available that offer practical advice to help break down the barriers people face when talking about their mental health. Lynch has been proactive in arranging workshops around

the subject of mental health and in encouraging our staff to talk about any issue that is deeply affecting them. We also have trained mental health aiders who are available when necessary. We need to keep talking and ensuring people affected by such problems always know that there is somebody at the end of the line to talk to!

Let's do our bit and if you, or anyone you know, needs help with mental health problems, the following four organisations can provide support: Mind, Papyrus, Samaritans, CALM.



C'mon you Hemel!

Lynch is pleased to announce its support of local football club Hemel Hempstead Town FC as team kit sponsors for the 2019/20 season. Hemel, which plays in the National League South, has made a very encouraging start to the season. After eleven games it currently lies second in the league behind leaders Wealdstone. Club Secretary Dave Boggins (on left, top image) popped into Lynch HQ recently to present Liam and Rob Lynch with the new home shirt (red naturally!!) which Rob was very keen to try on!

We wish the team the very best in its push for promotion and will keenly follow its progress during 2019/20.



Costain visit Lynch HQ

This month Lynch hosted the quarterly Costain SHE Academy meeting at our Hemel HQ. The future stars of Costain were shown around the office and depot, received a people plant interface thumbs up session and were given an insight into what it is like to be a plant operator by carrying out some operator challenges, both in machines and on our plant simulator. Thank you to all of the Costain graduates who attended. Collaboration at the highest level.



James is a fast learner

James Hibbert (right) joined us at the beginning of June having just passed his class two HGV licence and without any driving or industry experience at all. It was decided that he would be trained by our driver development supervisor Craig McCormack who has done a fantastic job of passing his knowledge on to him. James has completed

his CPCS health and safety touch screen test, his FORS online accreditation and his SUD course; plus qualifying as an A50 loader securer. Well done to James who is already proving himself a valuable member of the transport team.

Long Service Award for Reg Playfoot

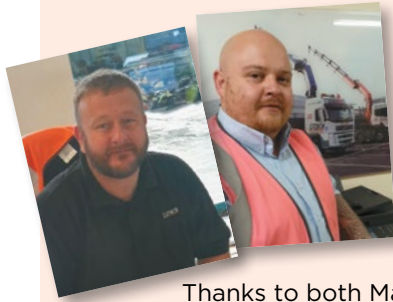
Operator Reg Playfoot made the journey to our Hemel Head office recently to receive his long service award from Director Merrill Lynch. Astonishingly Reg has clocked up an incredible 29 years of service with Lynch. Big congratulations to Reg and all at Lynch thank him for his long, unbroken service.



Matts ride to the rescue!

We recently were let down by an external supplier who could not fulfil a late request to collect machinery from Rushden. With nobody else available Matt Wilson (left), without hesitation, offered to go himself that evening. Consulting with Matt Payne (right) at Rushden he managed to collect the required equipment.

Thanks to both Matts for their dedication and professionalism in showing a 'can do' attitude in resolving this problem.



Well done Guy on 19 years of service

Starting back in July 2000, Guy Hillman (right) has clocked up an impressive 19 years with Lynch. Over the years Guy has applied his skills to numerous roles ranging from Sales to Hiredesk Manager, and is now working on sourcing all manner of plant and equipment on our Direct Solutions Team. Guy is a valued member of the Lynch team and brings a wealth of knowledge and experience to his role. Congratulations Guy and a big thank you from all at Lynch.



Fairness, Inclusion and Respect workshops.

At Lynch we are continually working to develop a culture of Fairness, Inclusion and Respect (FIR) within our workplace and the construction industry as a whole. This includes promoting equality and diversity and combating discrimination. Yesterday we held a FIR training workshop with staff at our Hemel office to ensure a greater understanding of this culture as well as offering a forum for employees to raise any personal concerns they may have. Lynch believe that by promoting FIR it brings about many business benefits, especially with regards to attracting and recruiting new staff and retaining the skill and talent of its current staff. FIR is an integral part of our business and one which we will continue to invest in order to deliver on 'Meeting Hire Demands'.



Just the biscuit!

In support of the Macmillan Cancer Support and their 'World's Biggest Coffee Morning' staff at our Hemel, Stanmore and Rushden offices/ depots helped to raise the fantastic sum of £2,000. Desks were covered with mouth-watering cakes and biscuits, many of which were homemade! Great effort by team Lynch with special mention to Surjit Bansal, Purchase Ledger Manager, who ensured the mornings were a complete success.



Big thank you to all the staff who helped to contribute towards our Family Fun Day event!

